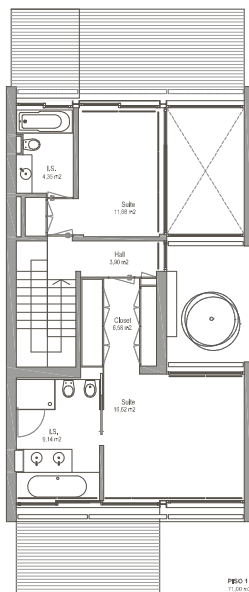
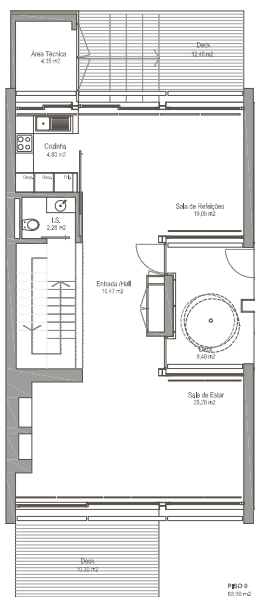




The Time Houses, designed by the architect João Paciência, are part of the Ocean Village complex, by the beach and the Troia Beach Club, offering an exquisite sea view. Its modern architecture and outdoor walls lined with natural stone are a landmark in the complex. Available in two-bedroom typology, with 190 sq. metres total construction, the houses are fully equipped and furnished in two styles by renowned portuguese interior designers. The private gardens with wood decking and hedges provide timeless shelter.





AREAS (sqm)

	A Enc	A Bal	A Tot	A Gar	Parking
V2 (m ²)	154	-	190,5	> 290	2

A Enc- Enclosed area | A Bal- Balcony area | A Tot- Total area | A Gar- Garden Area

EQUIPMENTS

- Fully equipped and furnished, all villas are ready to move into.
- + Household appliances | SIEMENS
 - Induction hob, Oven, Microwave oven, Dishwasher, Refrigerator-Freezer Combo, Cooker hood, Washer/Dryer
 - + Ipe wood flooring
 - + Fireplace
 - + Air Conditioning
 - + Hydronic radiant floor
 - + Intercom system
 - + Fire detector
 - + Intruder detector
 - + Gas detector
 - + Solar panels
 - + Blackout roller blinds

SERVICES

- + 24 hour security surveillance
- + Maintenance of common areas
- + Medical office
- + Private Garden



Miles of Beaches, Marina, Casino, Events Centre, Golf Championship Course, Pedestrian Paths, Cycle Lane, Tennis, Birdwatching and Roman Ruins.
Close to you and away from all.