

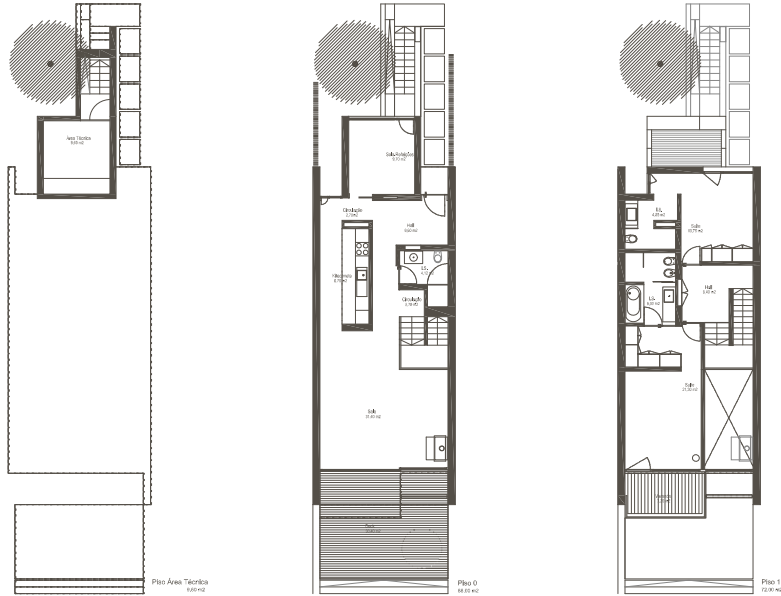


The Landhouse, located in the Ocean Village, designed by the architect J.J. Silva Garcia, is a shelter in nature with a sea view by the beach. It is the colour of the Earth and is solid as clay.

As you walk into the heart of the house, the living room opens up with a fireplace, ample and exploding with light. The windows open up onto a deck and a private garden, to enjoy with family and nature. The stairway, uncharacteristic since it divides the indoor space, opens the way to the private area of the Landhouse. Available in two-bedroom plus one typology, with 200 sq. metres total construction, these beach houses are fully equipped and furnished in two styles by renowned portuguese designers.



landhouses



AREAS (sqm)

	A Enc	A Bal	A Tot	A Gar	Parking
V2 (m ²)	152,8	7,2	200	> 290	2

A Enc- Enclosed area | A Bal- Balcony area | A Tot- Total area | A Gar- Garden Area

EQUIPMENTS

- Fully equipped and furnished, all villas are ready to move into.
- + Household appliances | SIEMENS
 - Induction hob, Oven, Microwave oven, Dishwasher, Refrigerator-Freezer Combo, Cooker hood, Washer/Dryer
 - + Ipe decking
 - + Air Conditioning
 - + Hydronic radiant floor
 - + Intercom system
 - + Solar panels
 - + Fire detector
 - + Intruder alarm
 - + Gas detector
 - + Blackout roller blinds

SERVICES

- + 24 hour security surveillance
- + Maintenance of common areas
- + Medical office
- + Private Garden



Miles of Beaches, Marina, Casino, Events Centre, Golf Championship Course, Pedestrian Paths, Cycle Lane, Tennis, Birdwatching and Roman Ruins.
Close to you and away from all.

TROIA
 RESORT PROPERTIES